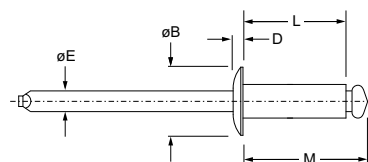


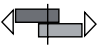





English	Français	Deutsch	Italiano	Español
Dome head	Tête plate	Flachrundkopf	Testa Tonda	Cabeza alomada
Body: Copper* Natural	Corps: Cuivre* Brut	Hülse: Kupfer* Blank	Corpo: Rame* Nessuna finitura	Cuerpo: Cobre* Natural
Stem: Steel Protective coating	Tige: Acier Revêtement de protection	Dorn: Stahl Schutzüberzug	Gambo: Acciaio Rivestimento protettivo	Vástago: Acero Revestimiento preservador

\*: 110



Ø					L	M	ØE	ØB	D			Part No.
nom.	min.	max.	min.	max.	ref.	ref.	ref.	max.	max.	lbf (kN) <sup>1)</sup>	lbf (kN) <sup>1)</sup>	
1/8" (3.2)	.063 (1.6)	.125 (3.2)	.129 (3.28)	.133 (3.38)	.250 (6.4)	.370 (9.4)	.076 (1.9)	.262 (6.7)	.040 (1.1)	215 (0.96)	300 (1.34)	CD 42 BS
	.188 (4.8)	.250 (6.4)			.375 (9.5)	.495 (12.6)						CD 44 BS

dimensions in inches and (mm) / en pouces et (millimètre) / alle Maße in Zoll und (mm) / in pollici e (millimetri) / en pulgadas y (milímetros)  
1) typical values / valeurs moyennes / typische Werte / Valori tipici / valores típicos